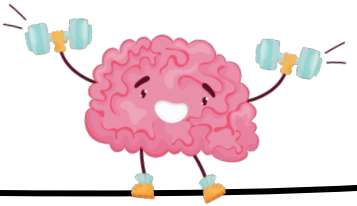


Literacy Support Stations

MAP THE SNAP



Activity: Orthographic Mapping

Video Tutorial: [Map the Snap Video Tutorial \(11:27\)](#)

Description:

What is Orthographic Mapping?

Orthographic mapping is a process that readers use to become fluent readers. Students use the oral language processing part of their brain to map (connect) the sounds in a word to the letters that represent those sounds in that same word.

Materials:

What do I need to get started?

- Elkonin boxes drawn on a piece of paper or a [Map the Snap Sheet](#)
- Counters or items to move
- Pencil
- Optional: create reusable station materials, put the Map the Snap Sheet in a plastic sleeve and use a dry erase marker.

Instructions:

1. Give each child their own copy of Elkonin boxes or a *Map the Snap Grid* and 4-5 of their own counters
2. Select the word you want to begin with, i.e. dog.
3. Say the word dog aloud and have student listen. Ask, "how many sounds do you hear in the word dog?" (3) Have them move one counter into a bottom square on the grid for each sound they hear. (child would move 3 counters)
4. Have child work through the same sounds in that word a 2nd time saying each sound in the word and moving each counter into the box above. "/d/ /o/ /g/"
5. Have them isolate the sounds they hear and write the letter or letters of the sound they hear in the box the below the counter.
6. Have child say each sound within the word, reading each sound separately from left to right, THEN, have them *blend* the sounds together.
7. Continue this same routine with other words your child or student is working on.

