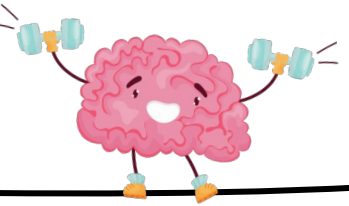


# Literacy Support Stations

## Adding -ly Suffix



**Activity:** Suffix -ly

**Video Tutorial:** [Nessy Spelling Strategy: -ly words](#)

**Resource:** [How to use the suffix -ly](#)

**Description:**  
Working on -ly suffix

**Materials:** iPad, magnetic letters,  
letter tiles

Contact your child's teacher if you're interested in -ly task cards

### Instructions:

1. Review what a suffix is.
2. Parent tutorial (watch videos)
3. Discuss that -ly is a suffix that goes at the end of some words.
4. Give word examples.
5. Watch the video a second time looking for the four rules of adding -ly.
6. Games that include adding -ly.  
[Adverbs -ly game spin](#)
7. Complete a task card activity together with your child. At home, parents can print task cards and complete activities using magnetic letters, letter tiles or paper letters.
8. Check-up activities: Go back and predict which -ly ending to add when watching the Nessy Spelling Strategy -ly video.